

# HUBBLE EXPLORERS

Nurturing Excellence in Early Years

Empowering Growth at

VIBGYOR<sup>®</sup>

GROUP OF SCHOOLS

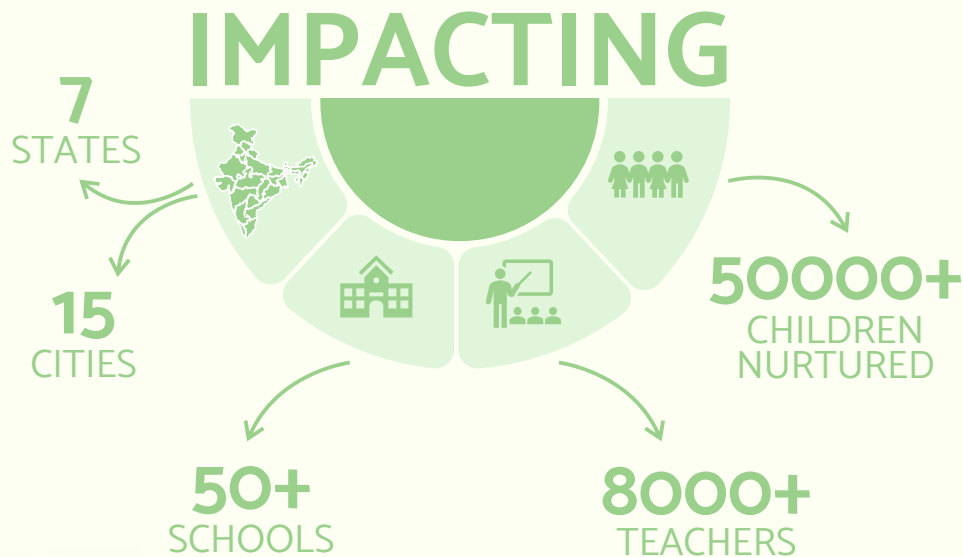


#where creativity meets curiosity

Innovating education with seamless EdTech solutions for impactful learning.

## DISCOVER THE TRUE POTENTIAL OF YOUR PRESCHOOL WITH HUBBLE EXPLORERS!

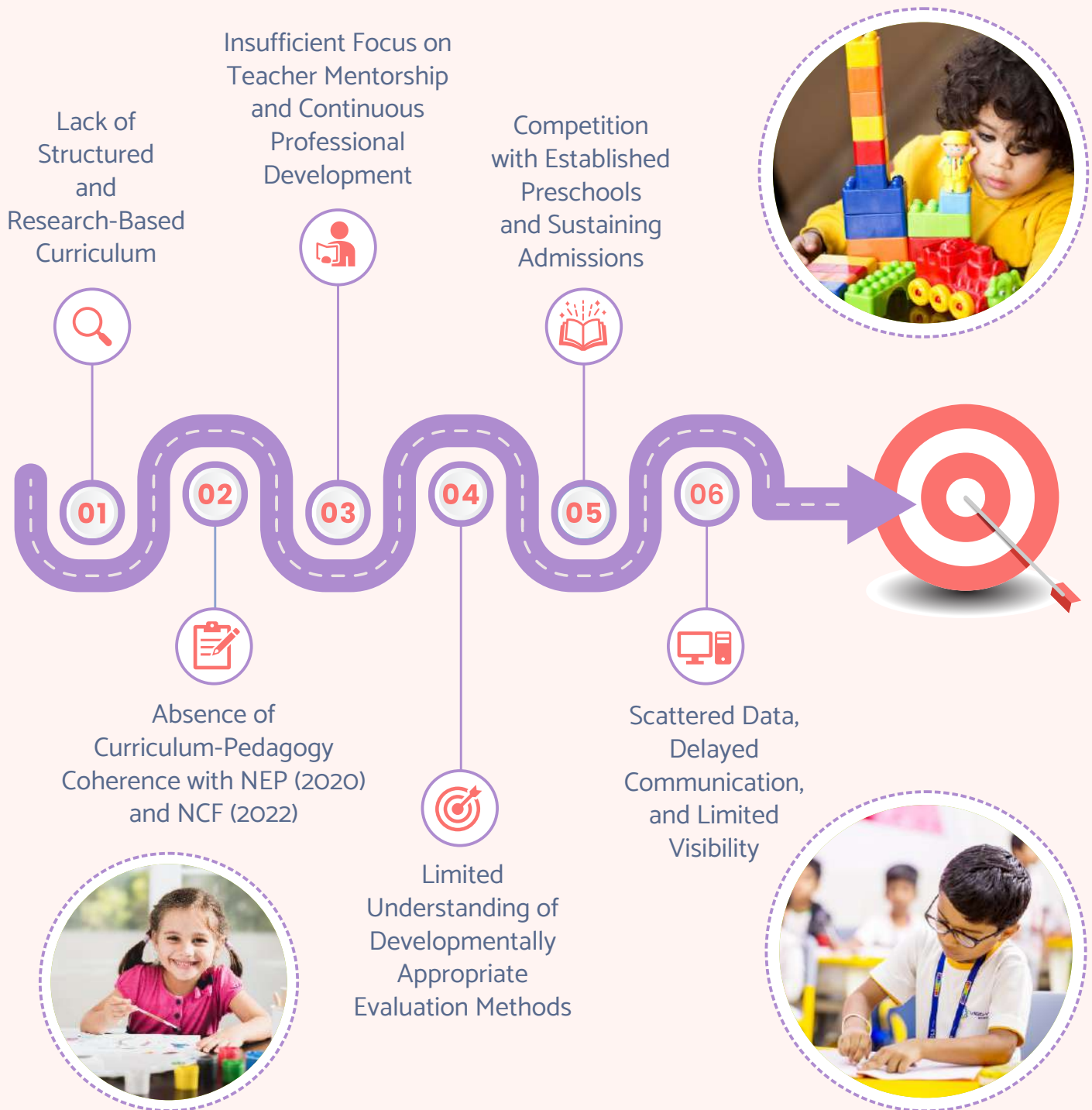
Drawing from the expertise that shaped VIBGYOR's learning journey, we present a thoughtfully crafted Early Years programme that nurtures hands-on exploration, language development, and social-emotional growth. With 85% of brain development occurring before the age of six, this immersive, inquiry-led curriculum lays a strong foundation for raising confident learners, critical thinkers, and compassionate individuals.



Now Partnering with Preschools Across India to Accelerate their Growth!



# COMMON ROADBLOCKS FACED BY PRESCHOOLS

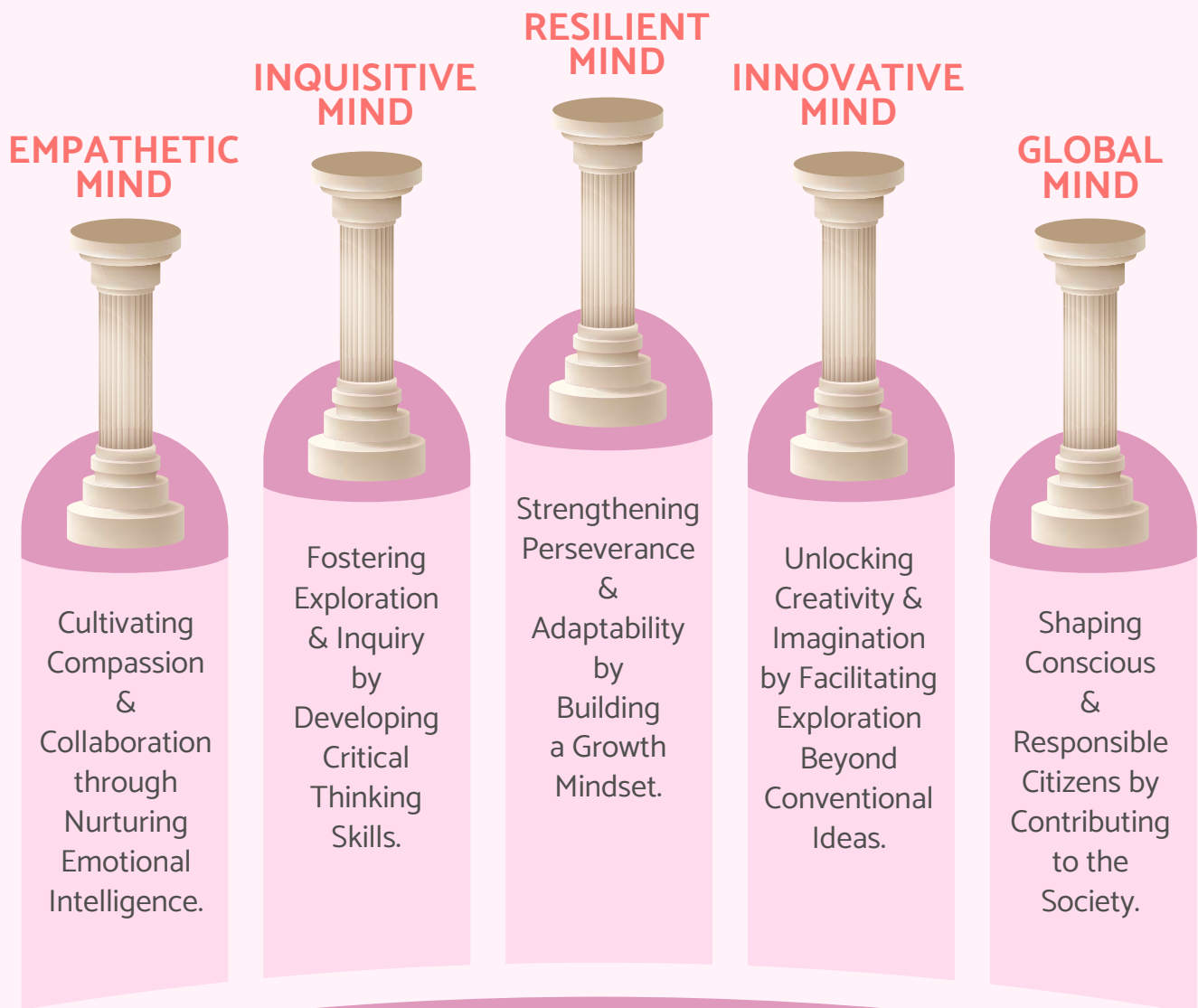


“Children must be taught how to think, not what to think.”

Margaret Mead

# INTRODUCING ASTRALIS - THE ILLUMINATED MINDS CURRICULUM

At Hubble Explorers, we believe young minds shape the future. Our pedagogy, **Astralis - The Illuminated Minds**, fosters curiosity, critical thinking, and global citizenship.

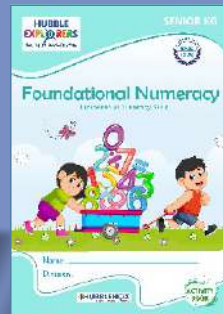
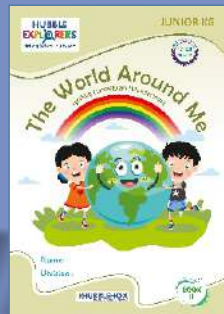
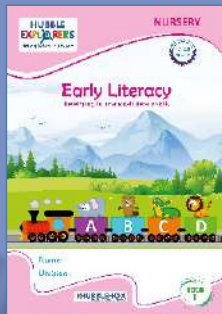


“The goal of early childhood education should be to activate the child’s own natural desire to learn.”

Maria Montessori

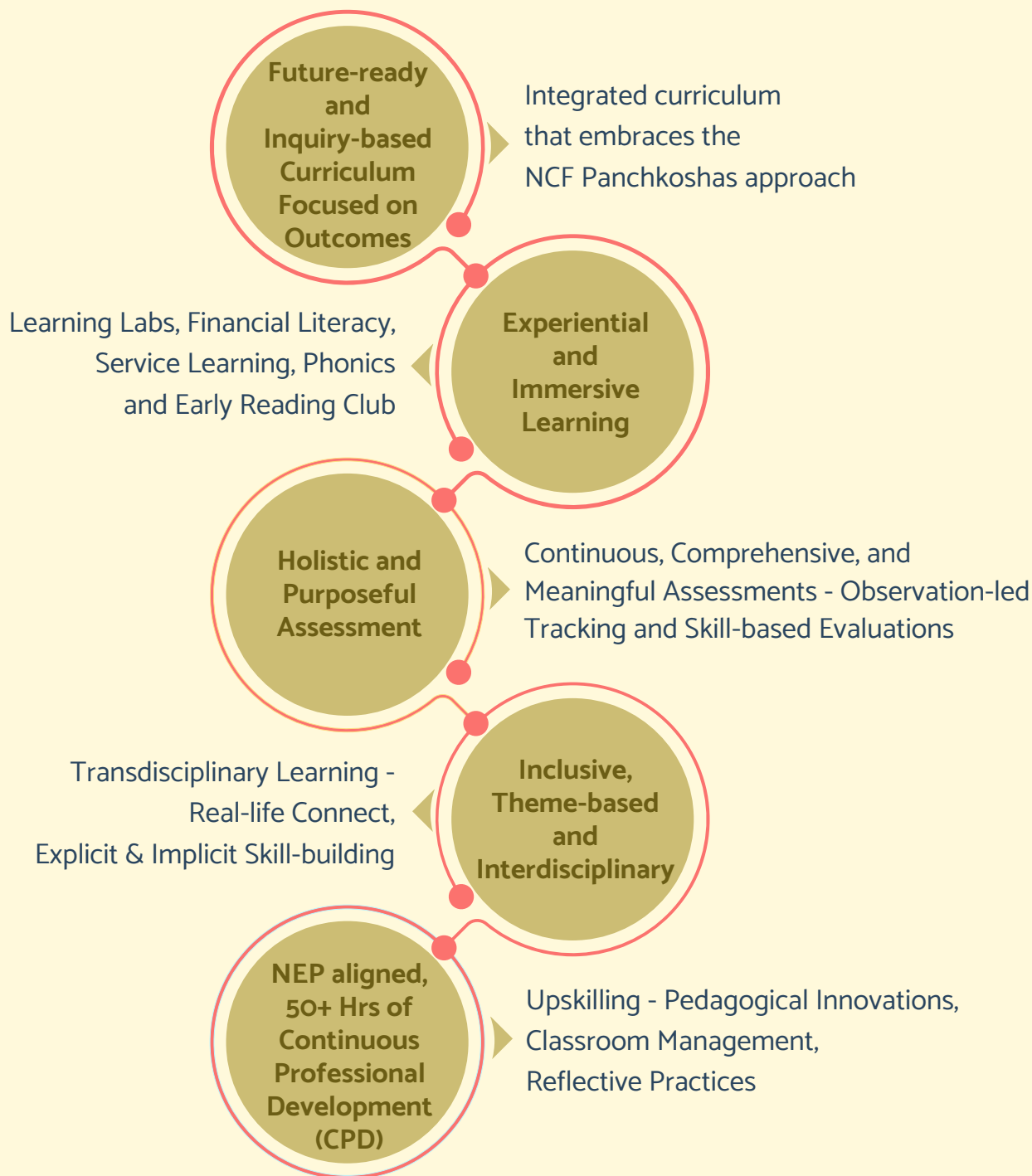
# OUR CURRICULUM APPROACH

## Blended Learning



# WHAT SETS OUR CURRICULUM APART?

Learning That Goes Beyond the Classroom



The mind of a child is a precious resource — fill it with wonder, not answers.

Inspired by Reggio Emilia approach

# WHAT'S IN IT FOR EVERYONE?

## Advantages for Every Stakeholder

### For School

- Stronger Brand Identity
- Effective Learning Outcomes
- Increase in Admissions
- Enhanced Parent Engagement
- Upskilled Teachers and Empowered Classrooms

### For Teachers

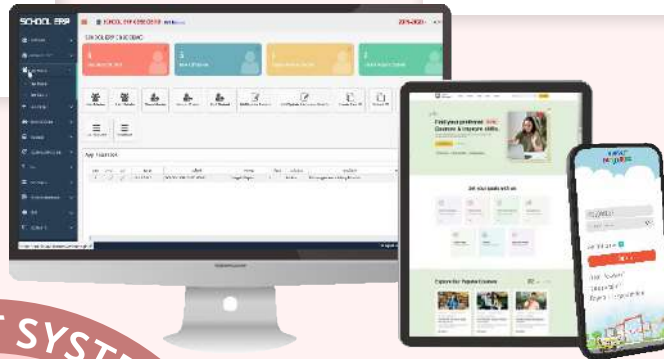
- Ready-to-use Content
- Effective Teaching Practices
- Mentorship & Skill Enhancement

### For Children

- Holistic Development Across All Domains
- Early Language, Literacy & Numeracy Foundations
- Confidence-Building Through Real-Life Connections

### For Parents

- Parent Resources and Support
- Awareness of Child's Development & Milestones
- Happy Children at School



### SCHOOL MANAGEMENT SYSTEM (ERP)

- ▶ Student Information and Attendance
- ▶ Learning and Academic Management
- ▶ Fee Collection and Finance Management
- ▶ Staff Management

### PARENT SUPPORT APP

- ▶ Daily Updates and Communication
- ▶ Attendance and Transport Tracking
- ▶ Access to Learning Milestone Reports
- ▶ Parent Resources and Support
- ▶ Fee Transactions

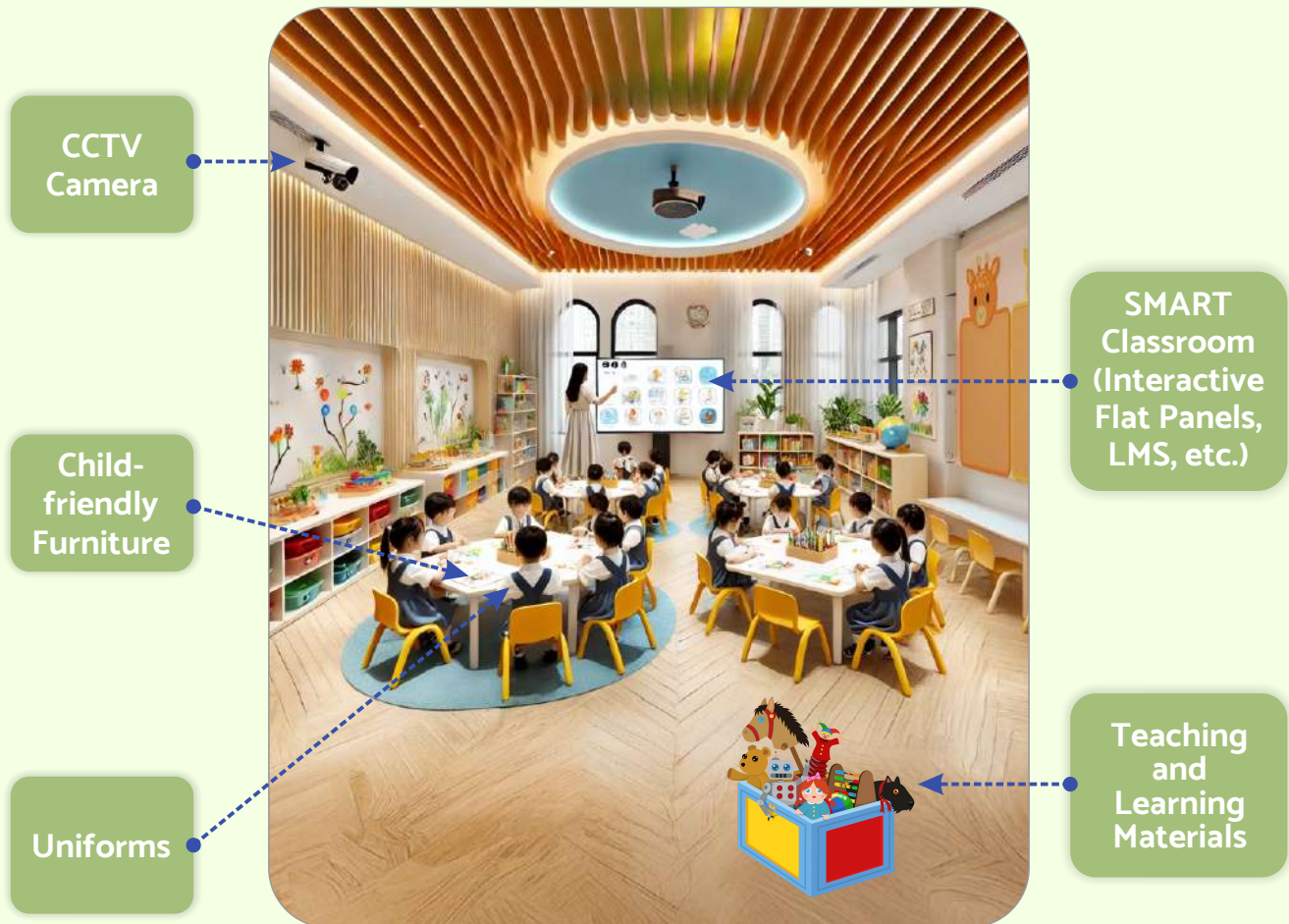
### TEACHING & LEARNING INTERFACE (LMS)

- ▶ Curriculum Planning and Execution
- ▶ Teaching and Learning Resources
- ▶ Assessment of Students

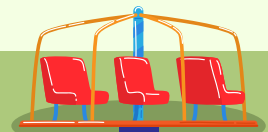
# END-TO-END PRESCHOOL SERVICES

Smart Start, Complete Support

We provide complete infrastructure solutions with ergonomically designed child-friendly furniture, immersive classroom setup, and tech-enabled learning, to create a safe, engaging, and development-focused environment.



- Quality Checks and Audits
- Registration and Accreditation (ECCE Centre)



Play Equipment



# A COMPREHENSIVE PRESCHOOL SOLUTION

## No Franchise and No Royalty Fee - Start or Elevate Your Preschool

Hubble Explorers is your trusted partner in creating a thriving, high-quality preschool with end-to-end solutions tailored to your needs. Whether you are starting fresh or enhancing your existing programme, our expertly designed packages support seamless growth and long-term success.

### Our Preschool Packages: Start-up to On-boarding

Offerings	Silver	Gold	Platinum
Guided curriculum along with a step-by-step 180-day teaching plan for the entire academic year for each level	✓	✓	✓
Engaging and child-appropriate teaching and learning resources (flashcards and printables)	✓	✓	✓
Activity calendar packed with fun-filled events like field trips, special days and festival celebrations	✓	✓	✓
Recommended age-appropriate, child-friendly exploratory toys and equipment list	✓	✓	✓
Captivating and stimulating digital teaching and learning resources (audio, videos and flashcards)	✗	✓	✓
Easy-to-use templates for observation-based assessments	✓	✓	✓
Student Essential Kit (per student) comprising of age-appropriate and interactive coursebooks	✓	✓	✓
Efficient curriculum delivery support through an online Learning Management System (LMS)	✗	✓	✓
School operations and management support through School Enterprise Resource Planning (ERP)	✗	✗	✓
Teacher Training - Certification of Teachers	2 2 trainer led	4 2 trainer led 2 self-paced	6 2 trainer led 4 self-paced
Parent Support App	✗	✗	✓
Marketing Support-Co-branding	✓	✓	✓



## WHY CHOOSE US?

Partnering with us means embracing a research-driven Early Education solution that ensures excellence at every step with expert pedagogy, cutting-edge EdTech, and a commitment to quality.

Join us on this transformative journey,  
where every child's potential is illuminated!

# HUBBLE<sup>TM</sup> EXPLORERS

Contact us to enquire about the  
Hubble Explorers Preschool Programme today!



Call or whatsapp us at: **8657 520 880**



[www.hubblehox.com/hubble-explorers/](http://www.hubblehox.com/hubble-explorers/)



[info@hubbleexplorers.in](mailto:info@hubbleexplorers.in)

**Empowering Preschools to Thrive on Their Transformational Growth Journey!**